

**SCRATCH  
REDEFINED.**



Featuring rich flavors and hearty ingredients, FLAV-R-PAC® Soup Sensations™ have been developed to rival scratch-made soups in taste, and make preparation a breeze.



*Chicken Noodle*



# Soup Sensations!

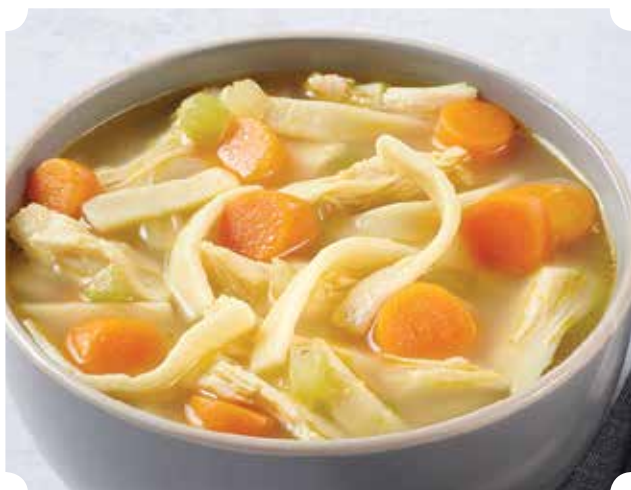
**SOUP SENSATIONS™ check all the boxes...**

- ✓ Made from the freshest, **premium ingredients**.
- ✓ We prepare it. You cook it – *for the first time*.
- ✓ Pre-prepped **reduces labor** and ensures **consistent quality** year round.
- ✓ IQF process "**locks in**" freshness, flavor & nutrients.
- ✓ **100% yield** (no waste).

## Scratch Redefined.

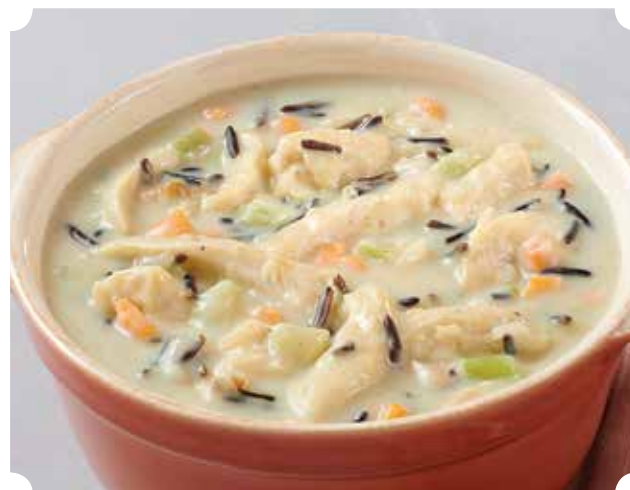
SOUP SENSATIONS™ are prepared—not *pre-cooked*—frozen scratch soups. Our unique preparation method results in a minimally processed soup: by adding our custom soup bases and individually quick frozen ingredients separately into polybags, the soup you serve has a fresher appearance and flavor.

You simply add water and cook the soup for the very first time, saving both time and labor. Choose from our many popular varieties that are as wholesome and colorful as they are flavorful and satisfying.



### CHICKEN NOODLE

No menu is complete without it. We add our own special egg noodles to carrot medallions, celery bits, diced onions, and tender chunks of chicken – all in a light and savory chicken broth.



### CHICKEN WITH WILD RICE

Our special blend of wild rice is perfectly paired with succulent chunks of chicken in a creamy base enhanced by onions, celery, carrots and herbs.



### CHICKEN TORTILLA

This traditional Mexican soup comes to life with tomatoes, sweet chilies, corn, black beans, onions and tender chicken against the sweet and zesty chipotle backdrop of a chicken and tomato broth.



### CLAM CHOWDER

If you like your clam chowder full of great seafood flavor, look no further. Tender potatoes are blended with savory clams, and crunchy celery in a rich and creamy, seasoned clam base.



### **CREAM OF BROCCOLI WITH CHEESE**

One of America's favorite comfort foods bumped up a notch – that's our Broccoli & Cheese soup. Tender broccoli florets, smooth cheddar cheese, cream and butter, with bits of onion.



### **CREAM OF POTATO**

Premium potatoes with tasty morsels of onion and celery in a creamy base flavored with uncured, smoked bacon crumbles. Hearty potato made perfect!



### **MINISTRONE**

Truly a Mediterranean masterpiece. Tomatoes, carrots, onions, zucchini, shell pasta, celery, green beans, kidney beans, garbanzo beans and spinach in a rich, tomato-based broth.



### **TOMATO BASIL**

A rich and savory tomato soup made with garden-fresh basil and Parmesan cheese that's complemented with the flavorful taste of real roasted garlic.



### **VEGETABLE BEEF**

A classic blend of potatoes, carrots, corn, peas, green beans, celery and roasted onions, accompanied by tender cuts of melt-in-your-mouth beef, all in a savory tomato and beef broth that's second-to-none.



### **CHILI SENSATIONS™ WITH BEEF**

Bursting with generous portions of beef crumbles, kidney beans, pinto beans, black beans, tomatoes, onions, green peppers and spices, this delicious chili has it all. Hearty, tempting and mouthwatering.



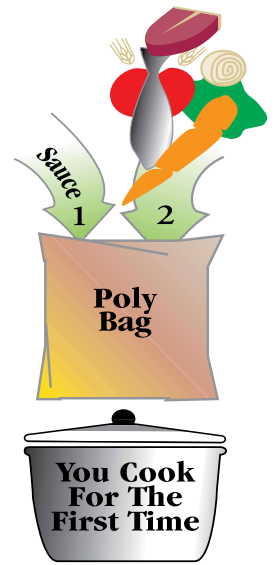
## How Has SOUP SENSATIONS™ Redefined Scratch?

### WE PREPARE IT –

Without using any preservatives, we prepare, quick freeze, and package all our concentrated scratch soup ingredients into convenient poly bag packaging.

### YOU COOK IT –

Simply add water, and cook our fully-prepared scratch soups for the very first time. The result? The soups you serve consistently satisfy your customers with their fresh, scratch-prep flavor and colorful, appetizing appearance.



	Serving Size (prepared)	Calories per serving	Total Fat (g)	Saturated fat (g)	Trans Fat (g)	Cholesterol (mg)	Sodium (mg)	Total Carbohydrates (g)	Dietary Fiber (g)	Total Sugar (g)	Added Sugar (g)	Protein (g)	Vitamin D (%)	Calcium (%)	Iron (%)	Potassium (%)
<b>NUTRITIONAL INFORMATION</b>																
Chicken Noodle	~1 Cup/113g	80	2	0.5	0	25	670	10	1	2	1	6	0	2	6	8
Chicken with Wild Rice	~1 Cup/113g	160	7	3.5	0	30	830	17	1	6	1	8	15	8	6	8
Chicken Tortilla	~1 Cup/113g	90	2	0	0	15	700	13	2	2	1	6	0	2	6	10
Clam Chowder	~1 Cup/113g	140	5	3	0	20	800	19	1	3	1	5	25	6	6	4
Cream of Broccoli with Cheese	~1 Cup/113g	170	14	8	0	40	860	9	1	3	1	6	6	15	6	4
Cream of Potato	~1 Cup/113g	190	9	5	0	30	630	23	0	6	1	6	30	6	0	6
Minestrone	~1 Cup/113g	90	2.5	1.5	0	5	830	15	2	5	1	2	0	4	6	8
Tomato Basil	~1 Cup/113g	80	1	0	0	0	690	15	2	6	2	2	0	2	6	8
Vegetable Beef	~1 Cup/113g	80	2	1	0	10	850	10	1	3	1	5	0	2	6	10
<b>CHILI SENSATIONS™</b>																
Chili with Beef	~1 Cup/113g	170	6	2.5	0	35	750	16	3	4	1	12	0	4	10	15

<b>PACK INFORMATION</b>							
	Key Information (see legend below)	CAT #	Pack Size	Gross Case Weight (lbs)	Case Cube	Pallet Pattern	Outside Case Dimensions
Chicken Noodle		117102	4/4 lbs.	17	0.45	17 x 7	12.875 x 6.875 x 8.75
Chicken with Wild Rice	■	117110	4/4 lbs.	17	0.45	17 x 7	12.875 x 6.875 x 8.75
Chicken Tortilla	■	117105	4/4 lbs.	17	0.45	17 x 7	12.875 x 6.875 x 8.75
Clam Chowder	■	117108	4/4 lbs.	17	0.40	17 x 7	12.875 x 6.875 x 7.75
Cream of Broccoli with Cheese	■	117104	4/4 lbs.	17	0.45	17 x 7	12.875 x 6.875 x 8.75
Cream of Potato	■	117107	4/4 lbs.	17	0.40	17 x 7	12.875 x 6.875 x 7.75
Minestrone		117109	4/4 lbs.	17	0.40	17 x 7	12.875 x 6.875 x 7.75
Tomato Basil	■	117103	4/4 lbs.	17	0.40	17 x 7	12.875 x 6.875 x 7.75
Vegetable Beef	■	117111	4/4 lbs.	17	0.45	17 x 7	12.875 x 6.875 x 8.75
<b>CHILI SENSATIONS™</b>							
Chili with Beef	■	117106	4/4 lbs.	17	0.45	17 x 7	12.875 x 6.875 x 8.75

■ Gluten Free

Learn more about NORPAC and our capabilities. Contact your local OPC Companies representative or visit [oregonpotato.com](http://oregonpotato.com).



An Oregon Potato Family Company