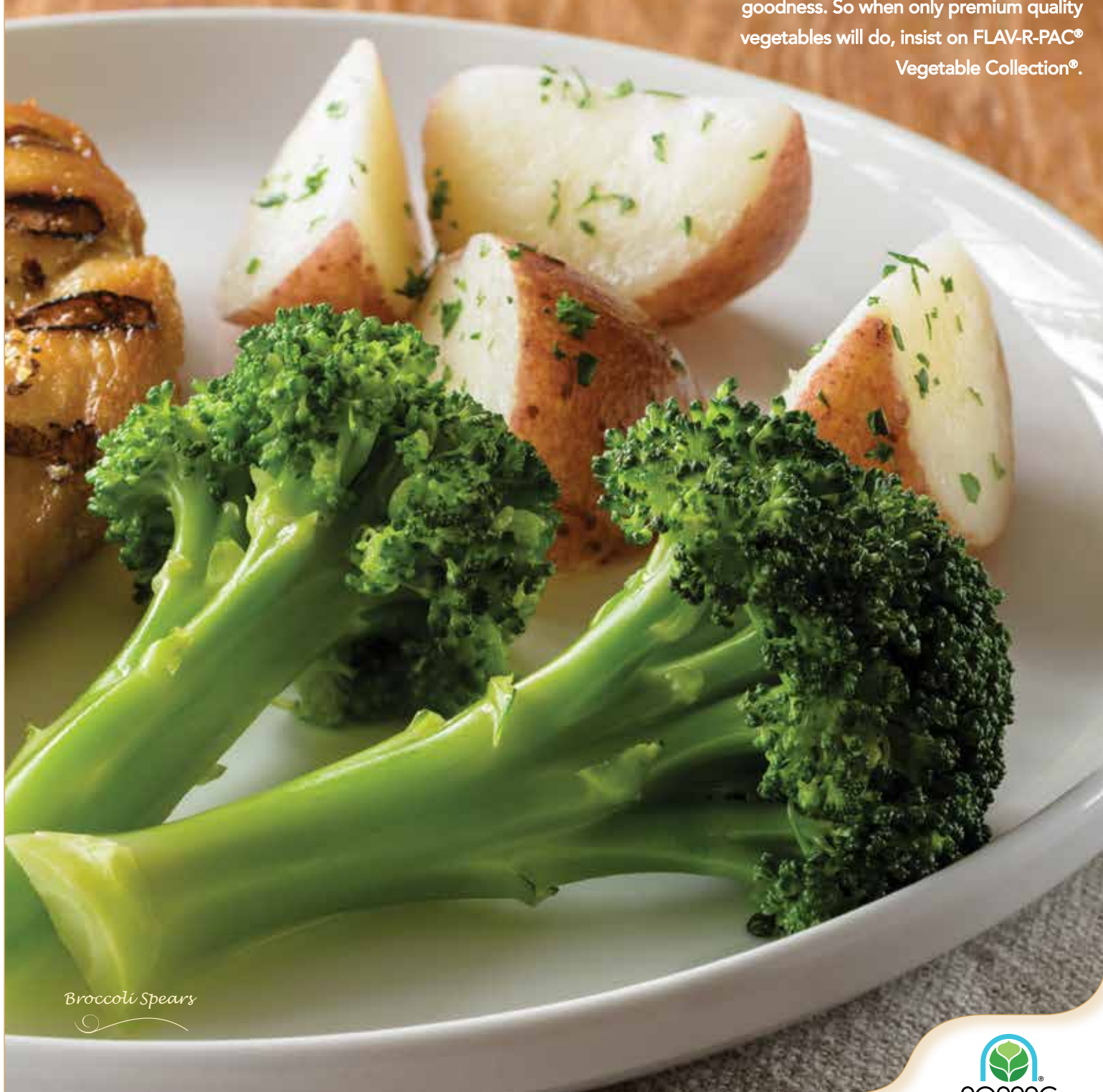




Fresh Pacific Northwest grown vegetables go from field to freezer in just hours, locking in natural texture, fresh flavor and nutritional goodness. So when only premium quality vegetables will do, insist on FLAV-R-PAC® Vegetable Collection®.



Broccoli Spears



A Fresh look at Frozen.



FLAV-R-PAC® frozen veggies all start fresh from the farm to ensure customer satisfaction and profits.

Compare for yourself:



FLAV-R-PAC

vs.



FRESH

vs.



CANNED

FLAV-R-PAC FROZEN vegetables are **picked and packed in just hours, at their peak of ripeness**, optimal flavor and maximum nutritional value.

Even though most consumers believe "fresh" produce is no more than 4 days old when purchased, it **can be 13 days (or more) old** before being served.

The natural taste and texture of CANNED veggies can be **altered by the heat from cooking and the canning process.**

FROZEN and properly stored vegetables **"lock in" nutrients and important vitamins.** Quick freezing stops the nutrient loss.

Most FRESH produce is **picked before it is ripe, with a full spectrum of vitamins & minerals.** During transit, direct heat and light can degrade nutrition and quality.

CANNED produce suffers a reduction of important **vitamins and minerals, as well as natural color** during the canning process.

Nothing is added to the vegetables in processing. Only specific product formulations have any added ingredients.

Many FRESH vegetables are **subject to seasonal availability limitations** or wide variations in quality – requiring menu adjustments.

CANNED veggies are often **high in sodium.**

FROZEN veggies and fruits arrive to you **fully prepared and recipe-ready.** You profit from 100% yield.

FRESH requires **time and labor-intensive** sorting, trimming, cleaning, slicing and dicing, adding to your food cost. **15 to 50% or more could be discarded.** And, 100% of fresh produce will spoil if not used promptly.

Most CANNED vegetables contain **40% or more of liquid/water that is discarded**, reducing product yields to 60% or less of the gross weight.

Enjoy the tradition of quality, taste and value that FLAV-R-PAC® Vegetable Collection® brings to the plate with this easy-to-prepare line of versatile offerings.



ASPARAGUS

Uniform in length and diameter, our asparagus spears provide premium appearance and excellent plate coverage.

Cut Styles: Medium Spears, Cuts and Tips



GREEN BEANS

We grow the very finest beans available, in many varieties and cuts. Our beans set the standard for great flavor.

Cut Styles: Whole, Whole Petite, Whole Extra Fine, Mixed Short Cut and Regular Cut



SPECIALTY CUT GREEN BEANS

Perfect on the side or in signature recipes, you'll love their labor-saving convenience, and the consistent quality and flavor throughout the year.

Cut Styles: French Cut Thick and Italian Cut



BABY LIMA BEANS

Our Baby Lima Beans are mild flavored with a tender bite, and outstanding served as a side dish or in casseroles, salads, soups and stews.



BROCCOLI

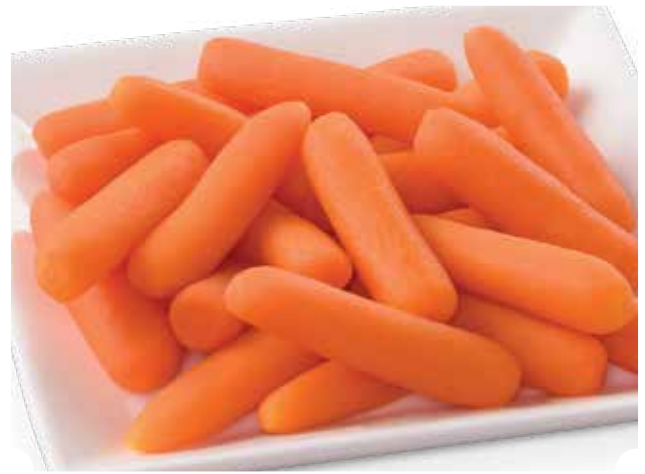
Our broccoli is picked and individually quick frozen at the peak of harvest, resulting in a rich green color and crisp texture.

Cut Styles: Florets, Mini Florets, Spears, Cuts and Chopped



WHOLE BRUSSELS SPROUTS

Smaller in size, our tender brussels sprouts have a mild and distinctive flavor.



CARROTS

Grown in the Pacific Northwest, these carrots have a bright, orange color and a naturally sweet taste.

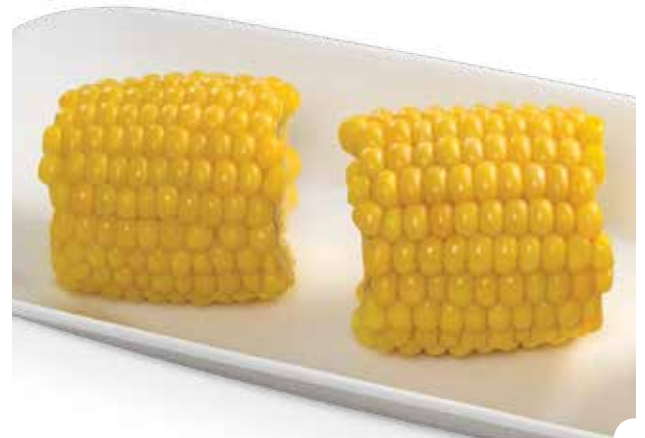
Cut Styles: Whole Baby, Whole Baby Petite, Sliced Smooth, Sliced Crinkle Cut, Diced & Shoestring



CAULIFLOWER

Grade A cauliflower featuring tight florets picked at the height of freshness for optimum color and robust piece integrity.

Cut Styles: Whole and Riced



COB CORN

Our sweet, nutritious corn grown in the Pacific Northwest is harvested at the peak of flavor.

Cut Styles: 3" Super Sweet, 3" COBBETTS®, 5.5" Cob and 5.5" Super Sweet



CUT CORN

Enjoy the taste of summer all year long with our delicious varieties of sweet and tender cut corn.

Cut Styles: Candy Corn, Cut Corn, Super Sweet Cut Corn and Super Sweet Cut White Corn



EDAMAME

Edamame has been used as a source of protein for over two thousand years, and is perfect for snacks, in vegetable dishes, salads, and soups.

Cut Styles: Whole, Shelled and Blend



MIXED VEGETABLES

Colorful, great-tasting mixes of Grade A vegetables provide unmatched flavor and recipe-readiness.

Cut Styles: Assorted Varieties, Soup/Stew Blend and Succotash



ONIONS

Bright in color, our onions are carefully trimmed and ready to use with no waste.

Cut Styles: Small Whole, Diced Varieties and Chopped



PEAS

We pack uniformly small peas to ensure a sweet taste, tender texture, and a naturally appealing color.

Cut Styles: Peas, Petite and Peas & Carrots.



SUGAR SNAP PEAS

Often considered the most flavorful variety of pea, Sugar Snap Peas provide a crisp, tender texture with a delightfully sweet taste.



PEPPERS

Bright in color and trimmed to uniform size, our premium quality peppers add color and flavor to stir fries, soups, sauces and side dishes.

Cut Styles: Green/Red Strips, Green Dices and Red Dices



POTATOES

Potatoes are legendary for their versatility, and ours are cut in a number of sizes to make meal preparation a breeze.

Cut Styles: White Diced, Redskin Diced and Redskin Tri-Cut Dices



SPINACH

Carefully washed and trimmed, our spinach is dark green, nutritious, and absolutely delicious.
Cut Styles: Chopped, Leaf and Cut Leaf



SQUASH

Whether cooked or sliced, our squash varieties are a distinctive and hearty addition to any dish.
Cut Styles: Cooked and Zucchini Crinkle Sliced

PACK INFORMATION							NUTRITIONAL INFORMATION																
FLAV-R-PAC®	Cat #	Pack Size	Gross Wt. (lb.)	Case Cube	Pallet Pattern	Outside Case Dimensions	Serving Size [C]	Serving Size (g)	Calories	Total Fat (g)	Saturated Fat (g)	Trans Fat (g)	Cholesterol (mg)	Sodium (mg)	Carbohydrates (g)	Dietary Fiber (g)	Sugars (g)	Added Sugar (g)	Protein (g)	Vitamin D (%)	Calcium (%)	Iron (%)	Potassium (%)
Asparagus Cuts IQF	108590	6/2.5 lb.	16.5	0.77	8 x 10	18.875 x 11.375 x 6.25	¾	83	20	0	0	0	0	0	3	1	1	0	2	0	2	0	4
Asparagus Spears, Medium IQF	109913	6/2.5 lb.	16.5	0.64	10 x 11	15.375 x 9.875 x 7.25	7 spears	83	20	0	0	0	0	0	3	1	1	0	2	0	2	0	4
BEANS																							
Baby Bean Blend	108761	12/2 lb.	25.5	1.21	7 x 8	19.375 x 12.375 x 8.75	¾	83	30	0	0	0	0	6	3	2	0	1	0	2	0	4	
Beans, Baby Lima IQF	108517	12/2.5 lb.	32.5	1.08	9 x 6	16.875 x 11.375 x 9.75	½	83	110	0	0	0	115	20	6	1	0	6	0	2	10	8	
Beans, French Cut Thick IQF	108546	12/2 lb.	26	1.21	7 x 8	19.375 x 12.375 x 8.75	1	83	30	0	0	0	0	6	2	1	0	1	0	2	6	4	
Beans, Italian Cut IQF	108844	12/2 lb.	26.5	1.08	9 x 7	16.875 x 11.375 x 9.75	¾	84	30	0	0	0	0	6	2	2	0	1	0	2	6	4	
Beans, Mixed Short Cut IQF (WP)	108449	1/20 lb.	21	0.72	15 x 6	12.125 x 9.875 x 10.375	1	83	30	0	0	0	0	6	2	1	0	1	0	2	6	4	
Beans, Regular Cut IQF	108464	12/2 lb.	26	1.08	9 x 7	16.875 x 11.375 x 9.75	⅔	81	30	0	0	0	0	6	2	1	0	1	0	2	6	4	
Beans, Regular Cut IQF (WP)	108698	12/2 lb.	26	0.91	9 x 7	17.375 x 10.375 x 8.75	⅔	81	30	0	0	0	0	6	2	1	0	1	0	2	6	4	
Beans, Regular Cut IQF	108893	1/20 lb.	21	0.72	15 x 6	12.125 x 9.875 x 10.375	⅔	81	30	0	0	0	0	6	2	1	0	1	0	2	6	4	
Beans, Regular Cut IQF (WP)	109078	1/20 lb.	21	0.72	15 x 6	12.125 x 9.875 x 10.375	⅔	81	30	0	0	0	0	6	2	1	0	1	0	2	6	4	
Beans Whole (4 sieve) IQF	108492	12/28 oz	23	1.12	8 x 7	18.875 x 11.375 x 9	¾	83	30	0	0	0	0	6	2	1	0	1	0	2	6	4	
Beans Whole (4 sieve) IQF	109003	1/20 lb.	21.5	0.91	9 x 8	17.375 x 10.375 x 8.75	¾	83	30	0	0	0	0	6	2	1	0	1	0	2	6	4	
Beans Whole Extra Fine	109043	12/2 lb.	25.5	1.21	7 x 7	19.375 x 12.375 x 8.75	¾	83	30	0	0	0	0	7	3	2	0	0	0	2	0	4	
Beans Whole Extra Fine	114197	1/20 lb.	21	1.08	9 x 7	16.875 x 11.375 x 9.75	¾	83	30	0	0	0	0	7	3	2	0	0	0	2	0	4	
Beans Whole Petite IQF	109104	12/2 lb.	26	1.21	7 x 8	19.375 x 12.375 x 8.75	¾	83	30	0	0	0	0	6	2	1	0	1	0	2	6	4	
Beans Whole Petite IQF	109055	1/15 lb.	16.5	0.72	15 x 6	12.125 x 9.875 x 10.375	¾	83	30	0	0	0	0	6	2	1	0	1	0	2	6	4	
BEAUTIFUL VEGETABLES®																							
Broccoli Normandy IQF	108946	12/2 lb.	26	1.08	9 x 7	16.875 x 11.375 x 9.75	¾	81	25	0	0	0	20	5	2	2	0	1	0	2	0	4	
Broccoli Normandy IQF	108338	1/20 lb.	21	0.91	9 x 8	17.375 x 10.375 x 8.75	¾	81	25	0	0	0	20	5	2	2	0	1	0	2	0	4	
Italian Vegetables IQF	109016	1/20 lb.	21	0.72	15 x 6	12.125 x 9.875 x 10.375	⅔	84	30	0	0	0	25	6	2	2	0	1	0	2	0	4	
Winter Mix IQF	109065	12/2 lb.	26	1.21	7 x 8	19.375 x 12.375 x 8.75	1	92	25	0	0	0	20	4	2	2	0	2	0	2	0	4	
BROCCOLI																							
Broccoli Chopped IQF (USA)	109083	12/2 lb.	26	1.08	9 x 7	16.875 x 11.375 x 9.75	¾	85	25	0	0	0	15	4	2	1	0	2	0	2	0	4	
Broccoli Chopped IQF (USA)	108695	1/20 lb.	21	0.91	9 x 8	17.375 x 10.375 x 8.75	1	87	25	0	0	0	15	4	2	1	0	2	0	2	0	4	
Broccoli Cuts IQF (USA)	108508	12/2 lb.	25.5	1.55	7 x 6	19.375 x 12.875 x 10.75	1	85	25	0	0	0	15	4	2	1	0	2	0	2	0	4	
Broccoli Cuts IQF (USA)	109045	1/20 lb.	21	0.91	9 x 8	17.375 x 10.375 x 8.75	1	85	25	0	0	0	15	4	2	1	0	2	0	2	0	4	
Broccoli Cuts IQF (WP)	108959	12/2 lb.	25.5	1.55	7 x 6	19.375 x 12.875 x 10.75	1	85	25	0	0	0	15	4	2	1	0	2	0	2	0	4	
Broccoli Florets IQF (USA)	109101	12/2 lb.	25.5	1.55	7 x 6	19.375 x 12.875 x 10.75	1	85	25	0	0	0	15	4	2	1	0	2	0	2	0	4	
Broccoli Florets (Mexico)	109916	12/2 lb.	26.6	0.94	8 x 8	19.063 x 11 x 7.75	1	85	25	0	0	0	15	4	2	1	0	2	0	2	0	4	
Broccoli Mini Florets IQF (Mexico)	109918	12/2 lb.	26.6	1.47	9 x 7	17 x 11.5 x 13	1	85	20	0	0	0	20	4	3	1	0	2	0	4	6	4	

(WP) denotes WESTPAC



PACK INFORMATION

NUTRITIONAL INFORMATION

	Cat #	Pack Size	Gross Wt. (lb.)	Case Cube	Pallet Pattern	Outside Case Dimensions	Serving Size (C)	Serving Size (g)	Calories	Total Fat (g)	Saturated Fat (g)	Trans Fat (g)	Cholesterol (mg)	Sodium (mg)	Carbohydrates (g)	Dietary Fiber (g)	Sugars (g)	Added Sugar (g)	Protein (g)	Vitamin D (%)	Calcium (%)	Iron (%)	Potassium (%)
BROCCOLI cont.																							
Broccoli Riced (USA)	115464	1/40 lb.	42	1.62	9 x 4	16.75 x 10.625 x 15.75	1	105	35	0	0	0	0	45	8	3	1	0	2	0	4	6	6
Broccoli Spears (Mexico)	109915	12/2 lb.	26.6	0.94	8 x 8	19.063 x 11 x 7.75	1	89	25	0	0	0	0	15	4	2	1	0	2	0	2	0	4
BRUSSELS SPROUTS																							
Brussels Sprouts Medium IQF	108522	12/2 lb.	25.5	1.08	9 x 7	16.875 x 11.375 x 9.75	6 sprouts	85	45	0	0	0	0	15	8	3	2	0	3	0	2	6	6
Brussels Sprouts Medium IQF	108461	1/20 lb.	21	0.72	15 x 6	12.125 x 9.875 x 10.375	6 sprouts	85	45	0	0	0	0	15	8	3	2	0	3	0	2	6	6
CARROTS																							
Carrots Diced IQF	108902	12/2 lb.	26	0.96	9 x 8	16.875 x 10.875 x 9	2/3	85	35	0	0	0	0	40	8	3	4	0	1	0	2	0	4
Carrots Diced IQF	108927	1/20 lb.	21	0.72	15 x 6	12.125 x 9.875 x 10.375	2/3	85	35	0	0	0	0	40	8	3	4	0	1	0	2	0	4
Carrots Sliced Smooth IQF	109130	12/2 lb.	26	1.08	9 x 7	16.875 x 11.375 x 9.75	2/3	85	35	0	0	0	0	40	8	3	4	0	1	0	2	0	4
Carrots Sliced Smooth IQF	108491	1/20 lb.	21	0.72	15 x 6	12.125 x 9.875 x 10.375	2/3	85	35	0	0	0	0	40	8	3	4	0	1	0	2	0	4
Carrots Sliced CC IQF	108484	12/2 lb.	26	1.08	9 x 7	16.875 x 11.375 x 9.75	2/3	85	35	0	0	0	0	40	8	3	4	0	1	0	2	0	4
Carrots Sliced CC IQF	108906	1/20 lb.	21	0.72	15 x 6	12.125 x 9.875 x 10.375	2/3	85	35	0	0	0	0	40	8	3	4	0	1	0	2	0	4
Carrots Crinkle Sliced (WP)	108683	1/20 lb.	21	0.72	15 x 6	12.125 x 9.875 x 10.375	2/3	85	35	0	0	0	0	40	8	3	4	0	1	0	2	0	4
Carrots Whole Baby IQF	108676	12/2 lb.	26	0.96	9 x 6	16.875 x 10.875 x 9	2/3	85	35	0	0	0	0	40	8	3	4	0	1	0	2	0	4
Carrots Whole Baby IQF	108486	1/20 lb.	21	0.72	15 x 6	12.125 x 9.875 x 10.375	2/3	85	35	0	0	0	0	40	8	3	4	0	1	0	2	0	4
CAULIFLOWER																							
Cauliflower IQF (USA)	108387	12/2 lb.	26	1.21	7 x 8	19.375 x 12.375 x 8.75	4 pieces	85	25	0	0	0	0	20	4	2	2	0	1	0	2	0	4
Cauliflower (WP)	108951	12/2 lb.	26	1.21	7 x 8	19.375 x 12.375 x 8.75	4 pieces	85	25	0	0	0	0	20	4	2	2	0	1	0	2	0	4
Cauliflower Riced	108840	2/5 lb.	11	0.55	15 x 10	16 x 8.875 x 6.75	1	105	30	0	0	0	0	25	5	2	2	0	2	0	2	0	4
Cauliflower Riced	114381	1/40 lb.	42	1.62	9 x 4	16.75 x 10.625 x 15.75	1	105	30	0	0	0	0	25	5	2	2	0	2	0	2	0	4
COB CORN																							
3" Cob Corn Super Sweet IQF	108670	96 Ear	31	1.05	10 x 6	16.375 x 12 x 9.25	1 ear	85	80	1.5	0	0	0	0	15	4	6	0	3	0	0	0	4
3" COBBETTS® IQF	108482	96 Ear	31	1.05	8 x 7	16.375 x 12 x 9.25	1 ear	85	90	0.5	0	0	0	0	19	2	3	0	3	0	0	0	4
3" Cob Corn IQF (WP)	111271	96 Ear	31	1.02	8 x 7	17.375 x 13.375 x 8.75	1 ear	85	90	0.5	0	0	0	0	19	2	3	0	3	0	0	0	4
5.5" Cob Corn IQF	108719	48 Ear	32.25	0.98	8 x 8	17.375 x 14.375 x 6.75	1 ear	157	170	1.5	0	0	0	0	36	4	5	0	5	0	0	6	8
5.5" Cob Corn Super Sweet IQF	108422	48 Ear	32.25	0.90	6 x 9	17.625 x 13.625 x 6.5	1 ear	157	150	2.5	0.5	0	0	0	27	7	12	0	5	0	0	6	8
CORN																							
Candy Corn	109138	12/2.5 lb.	31.5	1.08	9 x 6	16.875 x 11.375 x 9.75	2/3	90	90	1.5	0	0	0	0	16	4	7	0	3	0	0	6	4
Cut Corn IQF	108739	12/2.5 lb.	31.5	1.08	9 x 6	16.875 x 11.375 x 9.75	2/3	90	100	0.5	0	0	0	0	21	2	3	0	3	0	0	0	4
Cut Corn IQF	108852	1/20 lb.	21	0.72	15 x 6	12.125 x 9.875 x 10.375	2/3	90	100	0.5	0	0	0	0	21	2	3	0	3	0	0	0	4
Cut Corn IQF (WP)	108677	1/20 lb.	21	0.72	15 x 6	12.125 x 9.875 x 10.375	2/3	90	100	0.5	0	0	0	0	21	2	3	0	3	0	0	0	4
Cut Corn Super Sweet IQF	109179	12/2.5 lb.	31.5	1.08	9 x 6	16.875 x 11.375 x 9.75	2/3	90	90	1.5	0	0	0	0	16	4	7	0	3	0	0	0	4
Cut Corn Super Sweet IQF	108402	1/20 lb.	21	0.72	15 x 6	12.125 x 9.875 x 10.375	2/3	90	90	1.5	0	0	0	0	16	4	7	0	3	0	0	0	4
White Corn Super Sweet	108997	1/20 lb.	21	0.72	15 x 6	12.125 x 9.875 x 10.375	2/3	90	90	1	0	0	0	0	16	4	6	0	3	0	0	6	4
EDAMAME																							
Edamame Shelled	108914	6/2.5 lb.	16.5	0.78	8 x 10	18.875 x 11.375 x 6.25	2/3	89	120	5	0	0	0	10	8	7	0	0	12	0	6	10	10
Edamame Whole	108725	6/2.5 lb.	16.5	0.91	9 x 8	17.375 x 10.375 x 8.75	1 1/2	85	120	5	0	0	0	10	7	7	0	0	11	0	4	10	8
MIXED VEGETABLES																							
5-Way Mixed Vegetables IQF	108646	12/2.5 lb.	32	1.08	9 x 6	16.875 x 11.375 x 9.75	2/3	87	60	0	0	0	0	15	13	3	3	0	3	0	2	6	4
4-Way Mixed Vegetables IQF (WP)	108825	12/2.5 lb.	32	1.08	9 x 6	16.875 x 11.375 x 9.75	2/3	85	50	0	0	0	0	40	10	3	3	0	2	0	2	6	4
5-Way Mixed Vegetables IQF	108776	1/20 lb.	21	0.72	15 x 6	12.125 x 9.875 x 10.375	2/3	87	60	0	0	0	0	15	13	3	3	0	3	0	2	6	4
4-Way Mixed Vegetables IQF (WP)	108758	1/20 lb.	21	0.72	15 x 6	12.125 x 9.875 x 10.375	2/3	85	50	0	0	0	0	40	10	3	3	0	2	0	2	6	4
Soup/Stew Veg. Blend IQF	108557	1/20 lb.	21	0.72	15 x 6	12.125 x 9.875 x 10.375	2/3	92	40	0	0	0	0	30	9	2	2	0	1	0	2	0	6
Succotash IQF	108593	12/2.5 lb.	32.5	1.08	9 x 6	16.875 x 11.375 x 9.75	2/3	95	110	0.5	0	0	0	15	22	3	2	0	4	0	0	6	6
OKRA																							
Okra Cuts	108779	12/2 lb.	25.5	1.08	9 x 7	16.875 x 11.375 x 9.75	3/4	84	30	0	0	0	0	10	6	3	2	0	1	0	6	0	4
ONIONS																							
Onions Chopped IQF	108505	12/2 lb.	25.5	1.08	9 x 7	16.875 x 11.375 x 9.75	2/3	85	30	0	0	0	0	5	6	1	3	0	1	0	2	0	2
Onions Diced 3/8"	101529	1/25 lb.	27	1.02	10 x 6	15.375 x 12.25 x 9.375	2/3	85	30	0	0	0	0	5	6	1	3	0	1	0	2	0	2
Onions Diced 3/8"	101578	1/45 lb.	46.6	1.52	10 x 4	16.125 x 11.813 x 13.813	2/3	85	30	0	0	0	0	5	6	1	3	0	1	0	2	0	2
Onions Small Whole IQF	108564	12/2 lb.	25.5	0.91	9 x 8	17.375 x 10.375 x 8.75	2/3	83	25	0	0	0	0	5	6	1	3	0	1	0	2	0	2

(WP) denotes WESTLAC

FLAV-R-PAC® Vegetable® COLLECTION

PACK INFORMATION							NUTRITIONAL INFORMATION																	
FLAV-R-PAC®	Cat #	Pack Size	Gross Wt. (lb.)	Case Cube	Pallet Pattern	Outside Case Dimensions	Serving Size [C]	Serving Size (g)	Calories	Total Fat (g)	Saturated Fat (g)	Trans Fat (g)	Cholesterol (mg)	Sodium (mg)	Carbohydrates (g)	Dietary Fiber (g)	Sugars (g)	Added Sugar (g)	Protein (g)	Vitamin D (%)	Calcium (%)	Iron (%)	Potassium (%)	
																								PEAS
Peas IQF	108530	12/2.5 lb.	32	1.08	9 x 6	16.875 x 11.375 x 9.75	2/3	89	70	0	0	0	0	0	13	4	5	5	5	0	2	6	4	
Peas IQF (WP)	108630	12/2.5 lb.	32	1.08	9 x 6	16.875 x 11.375 x 9.75	2/3	89	70	0	0	0	125	12	4	4	0	5	0	2	10	2		
Peas IQF	108889	1/20 lb.	21	0.72	15 x 6	12.125 x 9.875 x 10.375	2/3	89	70	0	0	0	0	13	4	5	5	5	0	2	6	4		
Peas IQF (WP)	108493	1/20 lb.	21	0.72	15 x 6	12.125 x 9.875 x 10.375	2/3	89	70	0	0	0	125	12	4	4	0	5	0	2	10	2		
Peas Petite IQF	108764	12/2.5 lb.	32	1.08	9 x 6	16.875 x 11.375 x 9.75	2/3	87	70	0	0	0	125	12	4	4	0	4	0	2	6	2		
Peas Sugar Snap IQF	108501	12/2 lb.	25.5	0.95	9 x 7	17.375 x 10.375 x 9.125	2/3	83	40	0	0	0	0	7	2	3	0	2	0	4	6	4		
Peas & Carrots IQF	108828	12/2.5 lb.	31.5	1.08	9 x 6	16.875 x 11.375 x 9.75	2/3	90	60	0	0	0	20	11	4	5	0	3	0	2	6	4		
Peas & Carrots IQF	109079	1/20 lb.	21	0.72	15 x 6	12.125 x 9.875 x 10.375	2/3	90	60	0	0	0	20	11	4	5	0	3	0	2	6	4		
Peas & Carrots IQF (WP)	108979	1/20 lb.	21	0.72	15 x 6	12.125 x 9.875 x 10.375	2/3	90	50	0	0	0	85	10	4	4	0	3	0	2	6	4		
PEPPERS																								
Pepper Strips Green/Red IQF	108663	12/2 lb.	26	1.08	9 x 7	16.875 x 11.375 x 9.75	3/4	84	20	0	0	0	0	4	1	2	0	1	0	0	0	4		
Peppers Diced Green IQF	108426	12/2 lb.	26	1.08	9 x 7	16.875 x 11.375 x 9.75	3/4	83	20	0	0	0	0	4	1	2	0	1	0	0	0	4		
Peppers Diced Red IQF	108935	12/2 lb.	26	1.08	9 x 7	16.875 x 11.375 x 9.75	3/4	83	20	0	0	0	0	4	1	2	0	1	0	0	0	4		
POTATOES																								
Potatoes Diced	108827	6/5 lb.	32	1.22	8 x 6	17.875 x 12.375 x 9.5	3/4	87	60	0	0	0	10	13	1	0	0	2	0	0	0	8		
Potatoes Redskin Diced 1/2" IQF	109022	4/5 lb.	21	0.78	8 x 10	18.875 x 11.375 x 6.25	2/3	85	60	0	0	0	10	13	1	0	0	2	0	0	0	8		
Potatoes Redskin Tri-Cut 1/2" IQF	109845	4/5 lb.	21	0.78	10 x 8	18.875 x 11.375 x 6.25	2/3	84	60	0	0	0	10	13	1	0	0	2	0	0	0	8		
Shredded Hash Browns IQF (OT)	111213	6/3 lb.	19	0.99	10 x 9	19.08 x 11.08 x 8.12	1	84	70	0	0	0	0	17	2	1	0	1	0	0	0	6		
Shredded Hash Browns IQF	116721	6/3 lb.	19	0.84	10 x 9	16.125 x 11.625 x 7.75	1	100	90	0	0	0	0	20	2	1	0	2	0	0	0	6		
SAUCED VEGETABLES																								
Corn Cream Style	108616	6/4 lb.	26	0.57	13 x 5	12.875 x 7.875 x 9.75	1/2	129	130	2.5	0	0	430	25	2	8	5	3	0	0	2	4		
Corn with Buttery Pepper Sauce	108406	12/2.5 lb.	31.5	0.88	10 x 6	16.125 x 10.75 x 8.75	2/3	107	130	5	1	0	320	17	4	8	2	3	0	0	6	4		
Whole Kernel Corn with Sauce	108472	12/2 lb.	26	0.82	10 x 7	15.375 x 10.875 x 8.5	2/3	107	150	4.5	0.5	0	420	24	2	7	4	3	0	0	2	4		
SPINACH																								
Spinach Chopped IQF	108798	12/2 lb.	25.5	1.22	10 x 6	15.875 x 11.813 x 11.25	1	81	25	0	0	0	80	4	2	0	0	2	0	8	6	6		
Spinach Chopped IQF	109931	1/20 lb.	21	0.91	10 x 6	15.875 x 11.813 x 11.25	1	81	25	0	0	0	80	4	2	0	0	2	0	8	6	6		
Spinach Cut Leaf IQF	109926	1/20 lb.	21	0.91	10 x 6	15.875 x 11.813 x 8.375	1	81	25	0	0	0	80	4	2	0	0	2	0	8	6	6		
SQUASH																								
Zucchini Crinkle Sliced IQF	108858	12/2 lb.	25.5	1.08	9 x 7	16.875 x 11.375 x 9.75	2/3	83	15	0	0	0	0	3	1	1	0	1	0	2	0	4		
VEGETABLE BLENDS																								
California Blend (Buffet Blend)	108793	1/20 lb.	21	0.72	15 x 6	12.125 x 9.875 x 10.375	1-3/4	73	25	0	0	0	20	4	2	2	0	1	0	2	0	4		
Italian Vegetables IQF (WP)	109060	12/2 lb.	26	0.91	9 x 8	17.375 x 10.375 x 8.75	2/3	84	35	0	0	0	30	7	2	0	0	2	0	2	6	4		

(WP) denotes  (OT) denotes 

Learn more about NORPAC and our capabilities. Contact your local OPC Companies representative or visit oregonpotato.com.



An Oregon Potato Family Company